



900 MHz Yagi Antennas

Frequency:824-960MHz, gain:14dBi 10dBi 8dBi 6dBi, It is designed primarily for directional applications, Point to multipoint systems . The wide band antenna ideally suited for 800MHz Cellular band. 900MHz ISM Band & GSM Wireless LAN systems ,Point to multipoint & Non Line of Sight(NLOS) applications RFID ,SCADA ,Wireless Video Links

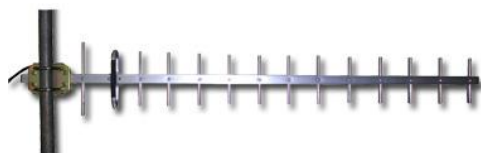
The Yagi directional Series antenna system offered by ZDA is constructed of 6061-T6 Aluminum for outstanding service life. Individual elements are braised to the main boom for permanent attachment. These antennas have high gain and good front to back performance to minimize external interference. They can be mounted in vertical or horizontal polarization.provides the user with anodized aluminum boom, solid elements,Heavy duty mounting hardwareWaterproof Design all-weather operation. these Yagi directional antenna features from ZDA are offered at cost-effective price.

Features:

- all weather Anodized Aluminum construction
- Can be installed for either vertical or horizontal polarization
- Solid Aluminum elements
- Heavy duty mounting hardware

Applications :

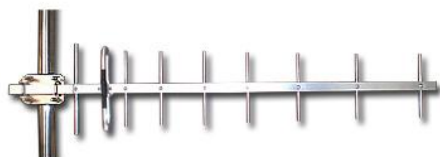
- 800MHz Cellular
- 900MHz ISM Band & GSM Wireless LAN systems
- Point to multipoint & Non Line of Sight(NLOS) applications
- RFID & SCADA
- Wireless Video Links



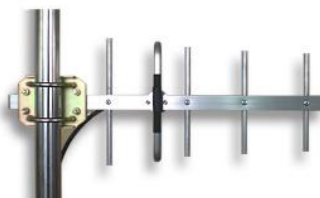
ZDADJ900-14YG



ZDADJ900-6YG



ZDADJ900-10YG



ZDADJ900-8YG

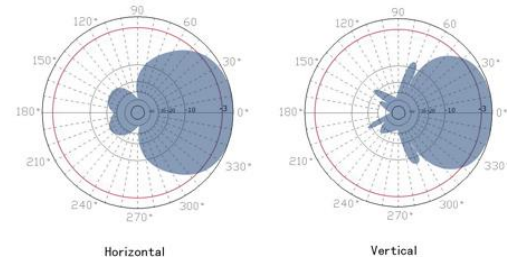




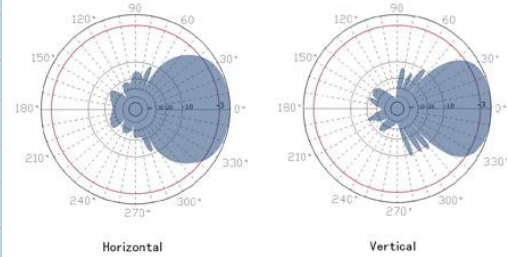
900MHz yagi Antennas

824-960MHz Yagi antenna series specifications

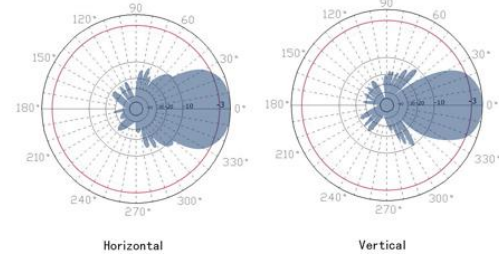
Model	ZDADJ900-6YG	ZDADJ900-8YG	ZDADJ900-12YG	ZDADJ900-14YG
Frequency Range	824-960MHz	824-960 MHz	824-960 MHz	824-960 MHz
Gain	6dBi	9dBi	12dBi	14dBi
Polarization	Vertical or Horizontal	Vertical or Horizontal	Vertical or Horizontal	Vertical or Horizontal
Horizontal Beam Width	90 °	78 °	52 °	48 °
Vertical Beam Width	82 °	68 °	45 °	38 °
VSWR	<1.5	<1.5	<1.5	<1.5
Front to back ratio	>13dB	>13dB	>15dB	>15dB
Input Impedance	50 ohm	50 ohm	50 ohm	50 ohm
Input Maximum Power	100 W	100 W	100 W	100 W
Lightning Protection	DC Ground	DC Ground	DC Ground	DC Ground
Connector	N female or customized	N female or customized	N female or customized	N female or customized
Size	11.8 inches(0.3m)	19.7 inches(0.5 m)	31inches(0. 8m)	45.7inches(1.16m)
Antenna Material	Alu alloy	Alu alloy	Alu alloy	Alu alloy
Antenna Structure	3 units	5 units	9 units	14 units
Operating Temperature	-40to 85° C (-40to 185° F)	-40to 85° C (-40to 185° F)	-40to 85° C (-40to 185° F)	-40to 85° C (-40to 185° F)
Diameter of Installation Pole	1.2-2.3in. (30-55mm)	1.2-2.3in. (30-55mm)	1.2-2.3in. (30-55mm)	1.2-2.3in. (30-55mm)
Weight	1.21 lbs. (0.55kg)	1.43 lbs. (0.65kg)	1.8 lbs. (0.78kg)	1.98 lbs. (0.9kg)
Wind Loading: 100MPH	4lb.	6lb.	10lb.	13lb.
120MPH	7lb.	9lb.	18lb.	21lb.



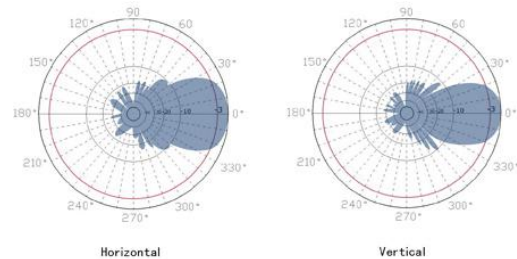
ZDADJ900-6YG Patterns



ZDADJ900-9YG Patterns



ZDADJ900-12YG Patterns



ZDADJ900-14YG Patterns