



## 1.9 GHz Yagi Antennas

**Frequency:1850-1990MHz, gain:17dBi 14dBi 12dBi 10dBi**, It is designed primarily for directional applications, Point to multipoint systems . The wide band antenna suited for directional applications, Point to Multipoint,1.9GHz PCS band applications.

The Yagi directional Series antenna system offered by ZDA is constructed of 6061-T6 Aluminum for outstanding service life. Individual elements are braised to the main beam for permanent attachment. These antennas have high gain and good front to back performance to minimize external interference. They can be mounted in vertical or horizontal polarization.provides the user with anodized aluminum boom, solid elements,Heavy duty mounting ,Design all-weather operation. these Yagi directional antenna features from ZDA are offered at cost-effective price.

### Features:

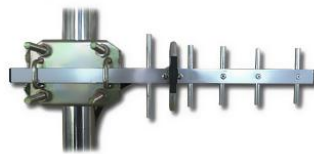
- all weather Anodized Aluminum construction
- Can be installed for either vertical or horizontal polarization
- Solid Aluminum elements
- Heavy duty mounting hardware

### Applications :

- 1.9 GHz band applications
- Personal Communication Service (PCS)
- Point to Point Systems & Point to Multi-point Systems



ZDADJ1900-17YG



ZDADJ1900-10YG



ZDADJ1900-14YG



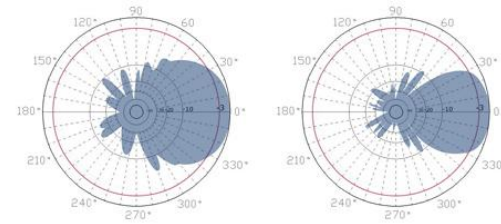
ZDADJ1900-12YG



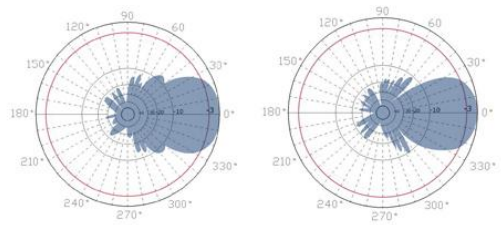


**1.9 GHz yagi Antennas**

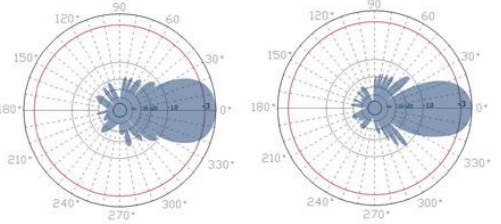
1850-1990MHz Yagi antenna series specifications				
Model	ZDADJ1900-10YG	ZDADJ1900-12YG	ZDADJ1900-14YG	ZDADJ1900-17YG
Frequency Range	1850-1990MHz	1850-1990MHz	1850-1990MHz	1850-1990MHz
Gain	10dBi	11dBi	14dBi	17dBi
Polarization	Vertical or Horizontal	Vertical or Horizontal	Vertical or Horizontal	Vertical or Horizontal
Horizontal Beam Width	65 °	55°	40°	35°
Vertical Beam Width	58°	48°	32°	28°
VSWR	<1.5	<1.5	<1.5	<1.5
Front to back ratio	>13dB	>15dB	>15dB	>15dB
Input Impedance	50 ohm	50 ohm	50 ohm	50 ohm
Input Maximum Power	100 W	100 W	100 W	150 W
Lightning Protection	DC Ground	DC Ground	DC Ground	DC Ground
Connector	N female or customized	N female or customized	N female or customized	N female or customized
Size	14inches( 0.33m)	21inches( 0.535 m)	24 inches( 0.62m)	40 inches( 1 m)
Antenna Material	Alu alloy	Alu alloy	Alu alloy	Alu alloy
Antenna Structure	6 units	12 units	14 units	17 units
Operating Temperature	-40to 85° C (-40to 185° F)	-40to 85° C (-40to 185° F)	-40to 85° C (-40to 185° F)	-40to 85° C (-40to 185° F)
Diameter of Installation Pole	1.2-2.3in. (30-55mm)	1.2-2.3in. (30-55mm)	1.2-2.3in. (30-55mm)	1.2-2.3in. (30-55mm)
Weight	1.1 lbs. (0.5kg)	1.54lbs. (0.7kg)	1.76lbs. (0.8kg)	2.2lbs. (1kg)
Wind Loading: 100MPH 120MPH	3.5lb. 7.2lb.	6.6lb. 10.6lb.	8.6lb. 15lb.	15.2lb. 19.2lb.



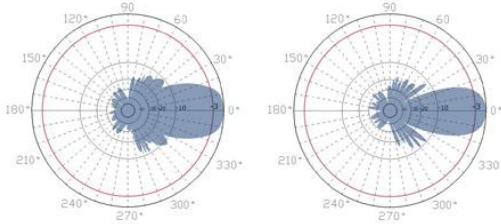
Horizontal Vertical  
**ZDADJ1900-10YG Patterns**



Horizontal Vertical  
**ZDADJ1900-12YG Patterns**



Horizontal Vertical  
**ZDADJ1900-14YG Patterns**



Horizontal Vertical  
**ZDADJ1900-17YG Patterns**